



Harsh & Hazardous

KILLARK®

Expansion & Deflection Fittings

SOLUTIONS for the *Construction Industry*





AF/AF8 SERIES

KILLARK

EXPANSION FITTINGS



Casted Body with NPT hub size

Type "A" Phenolic Insulating Bushing

Teflon Water Tight Packaging

Galvanized Washer

Tinned Copper Braid

End Coupling



EXPANSION FITTINGS



AF8-75



AF-75

UL LISTED - File E22699

FEATURES-SPECIFICATIONS

Applications

AF/AF8 Series Expansion Fittings are for use with IMC or rigid conduit installations. The AF/AF8 Series prevents damage of the electrical installations typically used in buildings and bridges by compensating linear movement due to temperature fluctuation or structural movement. This series provides up to a maximum 4" and 8" conduit movement (2" and 4" in either direction).

For applications involving IMC, a 15" minimum length of rigid conduit should be used entering the expansion fitting due to the slightly smaller O.D. of the IMC.

Features

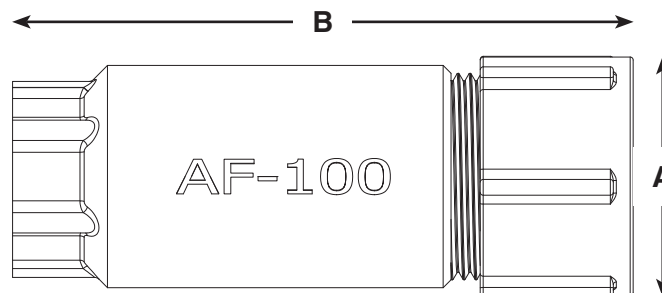
- Conduit body is casted from a durable and natural corrosive resistant ZA12 zinc alloy
- Relies on tinned braided copper external bonding jumper (AJ Series Jumper) per NEC 250.98
- Includes phenolic insulating bushing
- Contains PTFE synthetic fiber reinforced gasket with steel washer
- Tinned braided copper ring
- Rain, water and concretetight

Material/Finish

Add suffixes to the following for ordering logic:

- ZA12 (zinc Alloy) standard
- Hot Dipped Galvanized AF-50EG
- Aluminum AF-50AL
- Polyolefin Coated AF-50GG

EXPANSION FITTINGS				
4" CONDUIT MOVEMENT				BONDING JUMPER
HUB SIZE	CATALOG #	MAX. DIA. (A)	LENGTH (B)	CATALOG #
1/2"	AF-50	2"	6-1/4"	AJ-5075-14
3/4"	AF-75	2-1/4"	6-3/8"	AJ-5075-14
1"	AF-100	2-5/8"	6-5/8"	AJ-100125-14
1-1/4"	AF-125	3-1/8"	6-5/8"	AJ-100125-14
1-1/2"	AF-150	3-1/2"	6-5/8"	AJ-150200-14
2"	AF-200	4"	7-1/8"	AJ-150200-14
2-1/2"	AF-250	4-1/2"	7-1/2"	AJ-250300-14
3"	AF-300	5-3/8"	8-1/8"	AJ-250300-14
3-1/2"	AF-350	6"	8-1/2"	AJ-350400-14
4"	AF-400	6-5/8"	8-5/8"	AJ-350400-14
5"	AF-500	8"	9-1/2"	AJ-500600-14
8" CONDUIT MOVEMENT				BONDING JUMPER
1/2"	AF8-50	2"	10-1/4"	AJ-5075-24
3/4"	AF8-75	2-1/4"	10-3/8"	AJ-5075-24
1"	AF8-100	5-5/8"	10-5/8"	AJ-100125-24
1-1/4"	AF8-125	3-1/8"	10-5/8"	AJ-100125-24
1-1/2"	AF8-150	3-1/2"	10-5/8"	AJ-150200-24
2"	AF8-200	4"	11-1/8"	AJ-150200-24
2-1/2"	AF8-250	4-1/2"	11-1/2"	AJ-250300-24
3"	AF8-300	5-3/8"	12-1/8"	AJ-250300-24
3-1/2"	AF8-350	6"	12-1/4"	AJ-350400-24
4"	AF8-400	6-5/8"	12-3/8"	AJ-350400-24
5"	AF8-500	8"	11-1/8"	AJ-500600-24





DF SERIES

KILLARK

DEFLECTION EXPANSION FITTINGS



USA

Conduit

316 Stainless Steel Screws

Internal Tinned Copper Braid

316 Stainless Steel Bands

Synthetic Silicone Molded Rubber

Casted End Coupling

DEFLECTION EXPANSION FITTINGS



DF-100

LISTED - File E22699

FEATURES-SPECIFICATIONS

Applications

DF Series Deflection Fittings compensate any directional movement between two conduit joints. These fittings can withstand sporadic vibrations channeled by rotating equipment or vehicular traffic. The DF Series allows for a 3/4" contraction and extension movement as well as a 30° angular deflection to any direction and still maintain its structural integrity.

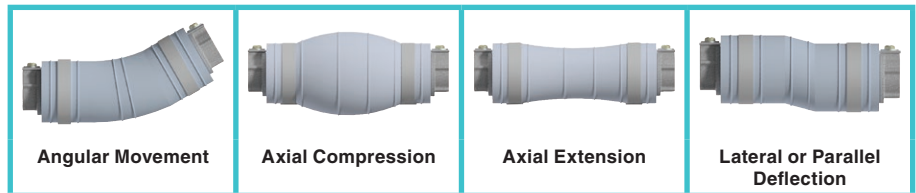
Features

- Durable cast ZA12 (zinc alloy) end couplings for use with rigid or IMC conduit
- Stainless steel lap bands for superior corrosion resistance and to ensure fastened strength
- Silicone rubber sleeve for high UV and environmental corrosion resistance
- Tinned braided copper grounding straps for electrical continuity
- Rain, water and concretetight

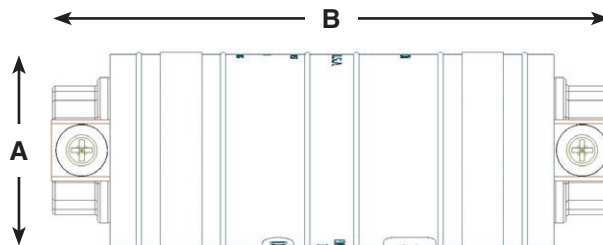
Material/Finish

Add suffixes to the following for ordering logic:

- ZA12 (zinc Alloy) standard
- Hot Dipped Galvanized DF-50EG
- Aluminum DF-50AL
- Polyolefin Coated DF-50GG

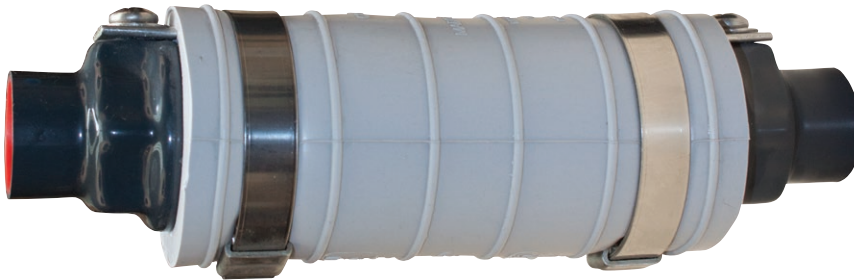


DEFLECTION DF			
HUB SIZE	CATALOG #	MAX. DIA. (A)	LENGTH (B)
1/2"	DF-50	2-1/4"	6-3/4"
3/4"	DF-75	2-1/2"	6-3/4"
1"	DF-100	2-3/4"	7"
1-1/4"	DF-125	3-1/8"	7-1/4"
1-1/2"	DF-150	3-1/8"	7-1/4"
2"	DF-200	3-7/8"	8-1/8"
2-1/2"	DF-250	4-3/8"	8-1/2"
3"	DF-300	5"	8-1/2"
3-1/2"	DF-350	5-3/4"	9-1/4"
4"	DF-400	6-1/4"	9-1/4"
5"	DF-500	7-1/4"	9-3/8"
6"	DF-600	8-1/4"	9-3/8"





DEFLECTION EXPANSION FITTINGS



UL LISTED – File E22699

DF-75GG

FEATURES-SPECIFICATIONS

Applications

DF Series Coated Deflection Fittings compensate any directional movement between two conduit joints. The Polyolefin coat adds additional corrosion resistance in applications where abnormal environmental conditions exist. These fittings can withstand sporadic vibrations channeled by rotating equipment or vehicular traffic. DF fittings allow for a 3/4" contraction and extension movement as well as a 30° angular deflection to any direction and still maintain its structural integrity.

Features

- 40 mil Polyolefin exterior coating
- Durable cast ZA12 (zinc alloy) end couplings for use with rigid or IMC conduit
- Stainless steel lap bands for superior corrosion resistance and to ensure fastened strength
- Silicone rubber sleeve for high UV and environmental corrosion resistance
- Tinned braided copper grounding straps for electrical continuity
- Rain, water and concretetight

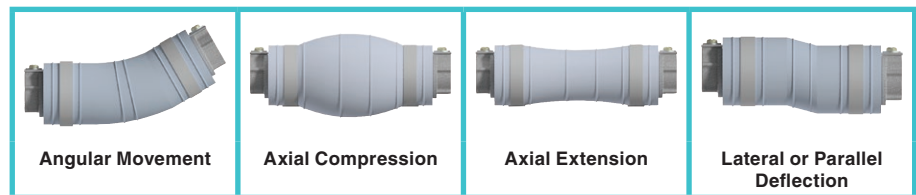
Specifications

- Contains no VOCs and no halogens
- Sealing boots for conduits
- Field Repairable

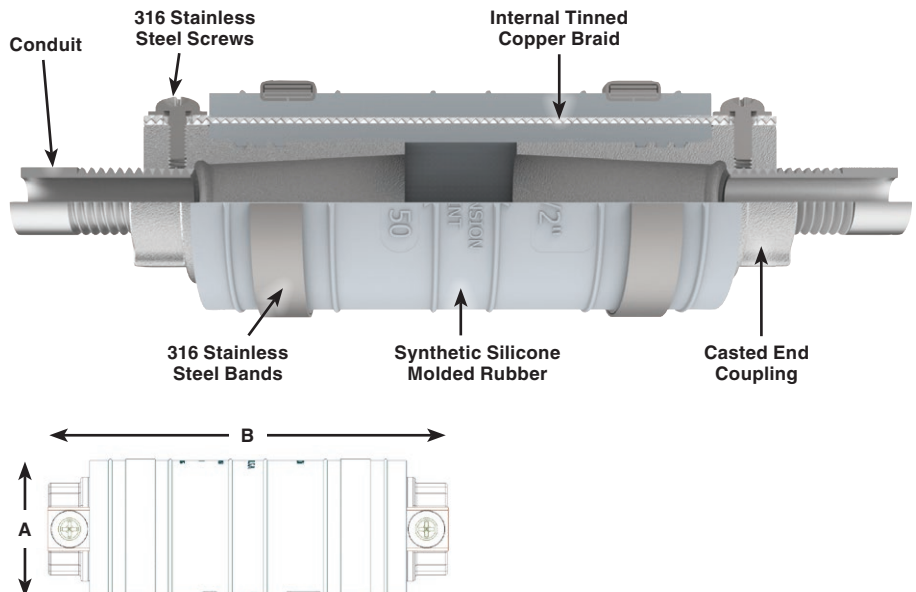
Material/Finish

Add suffixes to the following for ordering logic:

- ZA12 (zinc Alloy) standard
- Hot Dipped Galvanized DF-50EG
- Aluminum DF-50AL
- Polyolefin Coated DF-50GG



DEFLECTION DF			
HUB SIZE	CATALOG #	MAX. DIA.	LENGTH
1/2"	DF-50	2-1/4"	6-3/4"
3/4"	DF-75	2-1/2"	6-3/4"
1"	DF-100	2-3/4"	7"
1-1/4"	DF-125	3-1/8"	7-1/4"
1-1/2"	DF-150	3-1/8"	7-1/4"
2"	DF-200	3-7/8"	8-1/8"
2-1/2"	DF-250	4-3/8"	8-1/2"
3"	DF-300	5"	8-1/2"
3-1/2"	DF-350	5-3/4"	9-1/4"
4"	DF-400	6-1/4"	9-1/4"
5"	DF-500	7-1/4"	9-3/8"
6"	DF-600	8-1/4"	9-3/8"





EXPANSION FITTINGS



AF-75GG

UL LISTED – File E22699

FEATURES-SPECIFICATIONS

Applications

AF/AF8 Series Coated Expansion Fittings are for use with IMC or rigid conduit installations. The polyolefin coat adds additional corrosion resistance in applications where abnormal environmental conditions exist. This series still prevents damage of the electrical installations typically used in buildings and bridges by compensating linear movement due to temperature fluctuation or structural movement. This series provides up to a maximum 4" and 8" conduit movement (2" and 4" in either direction).

For applications involving IMC, a 15" minimum length of rigid conduit should be used entering the expansion fitting due to the slightly smaller O.D. of the IMC.

Features

- 40 mil polyolefin exterior coating
- Conduit body is cast from durable and naturally corrosive resistant ZA12 alloy
- Relies on tinned braided copper external bonding jumper (AJ Series) per NEC 250.98
- Includes phenolic insulating bushing
- Contains PTFE synthetic fiber reinforced gasket with steel washer to help maintain a strong seal
- Tinned braided copper ring
- Rain, water and concretetight

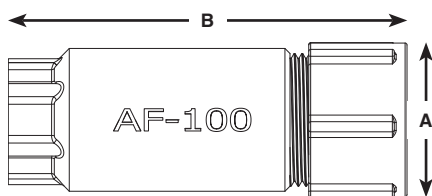
Specifications

- Contains no VOCs and no halogens
- Sealing boots for conduits
- Field Repairable

Material/Finish

Add suffixes to the following for ordering logic:

- ZA12 (zinc Alloy) standard
- Hot Dipped Galvanized AF-50EG
- Aluminum AF-50AL
- Polyolefin Coated AF-50GG



EXPANSION FITTINGS				
4" CONDUIT MOVEMENT				BONDING JUMPER
HUB SIZE	CATALOG #	MAX. DIA. (A)	LENGTH (B)	CATALOG #
1/2"	AF-50GG	2"	6-1/4"	AJ-5075-14
3/4"	AF-75GG	2-1/4"	6-3/8"	AJ-5075-14
1"	AF-100GG	2-5/8"	6-5/8"	AJ-100125-14
1-1/4"	AF-125GG	3-1/8"	6-5/8"	AJ-100125-14
1-1/2"	AF-150GG	3-1/2"	6-5/8"	AJ-150200-14
2"	AF-200GG	4"	7-1/8"	AJ-150200-14
2-1/2"	AF-250GG	4-1/2"	7-1/2"	AJ-250300-14
3"	AF-300GG	5-3/8"	8-1/8"	AJ-250300-14
3-1/2"	AF-350GG	6"	8-1/2"	AJ-350400-14
4"	AF-400GG	6-5/8"	8-5/8"	AJ-350400-14
5"	AF-500GG	8"	9-1/2"	AJ-500600-14
8" CONDUIT MOVEMENT				BONDING JUMPER
1/2"	AF8-50GG	2"	10-1/4"	AJ-5075-24
3/4"	AF8-75GG	2-1/4"	10-3/8"	AJ-5075-24
1"	AF8-100GG	5-5/8"	10-5/8"	AJ-100125-24
1-1/4"	AF8-125GG	3-1/8"	10-5/8"	AJ-100125-24
1-1/2"	AF8-150GG	3-1/2"	10-5/8"	AJ-150200-24
2"	AF8-200GG	4"	11-1/8"	AJ-150200-24
2-1/2"	AF8-250GG	4-1/2"	11-1/2"	AJ-250300-24
3"	AF8-300GG	5-3/8"	12-1/8"	AJ-250300-24
3-1/2"	AF8-350GG	6"	12-1/4"	AJ-350400-24
4"	AF8-400GG	6-5/8"	12-3/8"	AJ-350400-24
5"	AF8-500GG	8"	11-1/8"	AJ-500600-24



EXPANSION FITTINGS



TAF-75

UL LISTED – File E22699

FEATURES-SPECIFICATIONS

Applications

TAF Series Expansion Fittings compensate for linear movement between two conduit joints in runs of EMT (electrical magnetic tubing) conduit. This series provides up to a maximum 4" conduit movement (2" in either direction). Aids in preventing damaged conduit runs caused by temperature fluctuations and structural variations by assisting in movement.

Features

- TAF Series conduit body, cast from durable and naturally corrosive resistant ZA12 alloy, contains the following:
 - » Phenolic insulating bushing
 - » PTFE synthetic fiber reinforced gasket with steel washer
 - » Tinned braided copper ring
- Includes 8" steel conduit nipple
- Two steel EMT conduit connectors
- Relies on tinned braided copper external bonding jumper (AJ Series)
- Concretetight

Material/Finish

Add suffixes to the following for ordering logic:

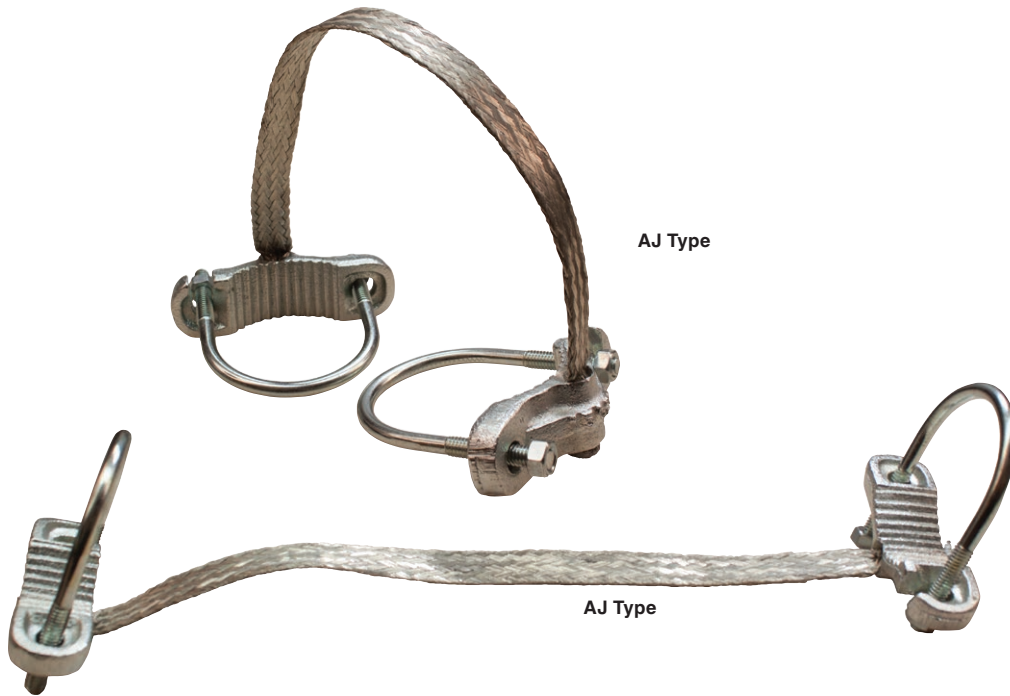
- ZA12 (zinc Alloy) standard
- Aluminum TAF-50AL

TAF SERIES EMT EXPANSION FITTINGS		
HUB SIZE	CATALOG #	BONDING JUMPER CAT. #
1/2"	TAF-50	AJ-5075-24
3/4"	TAF-75	AJ-5075-24
1"	TAF-100	AJ-100125-24
1-1/4"	TAF-125	AJ-100125-24
1-1/2"	TAF-150	AJ-150200-24
2"	TAF-200	AJ-150200-24
2-1/2"	TAF-250	AJ-250300-24
3"	TAF-300	AJ-250300-24
3-1/2"	TAF-350	AJ-350400-24
4"	TAF-400	AJ-350400-24



BONDING JUMPERS

UL US LISTED – File E22699 & E44925



AJ Type

AJE Type

FEATURES-SPECIFICATIONS

Applications

Type AJ is used for bonding two rigid, EMT or IMC steel/aluminum conduits together to ensure the required electrical conductivity between raceways.

Type AJE is used for bonding conduit to flat surfaces, such as boxes to ensure the required electrical conductivity between raceways.

Material/Finish

- Clamps and U-Bolts are electro-galvanized

Sizes

- Braid lengths listed are measured fully extended

AJ SERIES BONDING JUMPERS 14"	
CATALOG #	TRADE SIZE (IN)
AJ-5075-14	1/2 and 3/4
AJ-100125-14	1 and 1-1/4
AJ-150200-14	1-1/2 and 2
AJ-250300-14	2-1/2 and 3
AJ-350400-14	3-1/2 and 4
AJ-500600-14	5 and 6

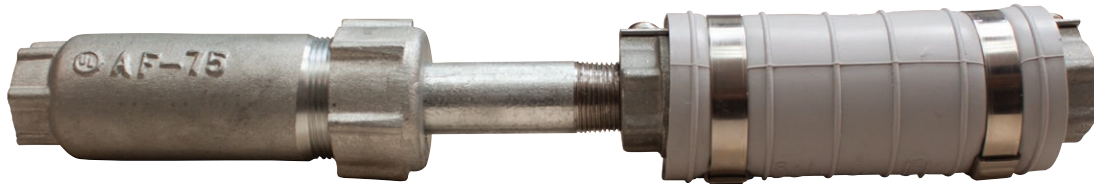
AJ SERIES BONDING JUMPERS 24"	
CATALOG #	TRADE SIZE (IN)
AJ-5075-24	1/2 and 3/4
AJ-100125-24	1 and 1-1/4
AJ-150200-24	1-1/2 and 2
AJ-250300-24	2-1/2 and 3
AJ-350400-24	3-1/2 and 4
AJ-500600-24	5 and 6

AJE SERIES BONDING JUMPERS 16"	
CATALOG #	TRADE SIZE (IN)
AJE-5075-16	1/2 and 3/4
AJE-100125-16	1 and 1-1/4
AJE-150200-16	1-1/2 and 2
AJE-250300-16	2-1/2 and 3
AJE-350400-16	3-1/2 and 4
AJE-500600-16	5 and 6

AJE SERIES BONDING JUMPERS 24"	
CATALOG #	TRADE SIZE (IN)
AJE-5075-24	1/2 and 3/4
AJE-100125-24	1 and 1-1/4
AJE-150200-24	1-1/2 and 2
AJE-250300-24	2-1/2 and 3
AJE-350400-24	3-1/2 and 4
AJE-500600-24	5 and 6



EXPANSION COMBO FITTING



LISTED – File E22699

AFDF-75

FEATURES-SPECIFICATIONS

Applications

AFDF Series Expansion/Deflection Combo Fittings compensates for linear and 3/4" level movement in any direction between two conduit joints in runs of IMC or rigid conduit. AFDF Series combines the DF style fitting with the AF style fitting for an additional 4" movement (2" in either direction) when the 3/4" linear movement in the DF is not enough. Helps prevent damaged conduit runs caused by temperature fluctuations and structural variations by assisting in movement.

Features

AF Series

- Conduit body is casted from durable and naturally corrosive resistant ZA12 zinc alloy
- Includes tinned braided copper external bonding jumper (AJE Series)
- Includes phenolic insulating bushing
- PTFE Teflon™ reinforced gasket with steel washer
- Fittings are assembled with malleable, ductile iron or steel nipple
- Rain, water and concretetight

DF Series

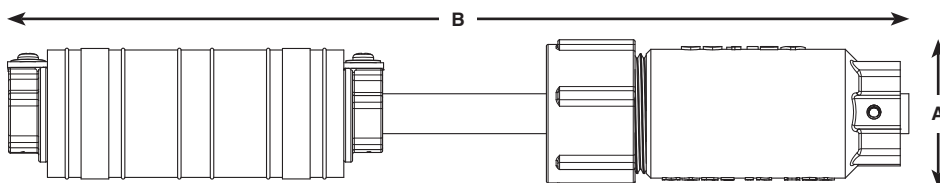
- Durable casted ZA12 zinc alloy end couplings with standard tapered threads for rigid or IMC conduit
- Stainless steel lap bands for superior corrosion resistance and to ensure fastened strength
- Silicone Rubber sleeve for high UV and environmental corrosion resistance
- Tinned braided copper grounding straps for electrical continuity
- Rain, water and concretetight

Material/Finish

Add suffixes to the following for ordering logic:

- ZA12 (zinc alloy) standard
- Hot Dipped Galvanized AFDF-50EG
- Aluminum AFDF-50AL
- Polyolefin Coated AFDF-50GG

AFDF COMBINATION DEFLECTION/EXPANSION			
HUB SIZE	CATALOG #	MAX. DIA. (A)	EST. LENGTH (B)
1/2"	AFDF-50	2-1/4"	15"
3/4"	AFDF-75	2-1/2"	15-1/8"
1"	AFDF-100	2-3/4"	15-5/8"
1-1/4"	AFDF-125	3-1/8"	15-7/8"
1-1/2"	AFDF-150	3-1/2"	15-7/8"
2"	AFDF-200	4"	17-1/4"
2-1/2"	AFDF-250	4-1/2"	18"
3"	AFDF-300	5-1/8"	18-5/8"
3-1/2"	AFDF-350	6"	19-3/4"
4"	AFDF-400	6-5/8"	20"
5"	AFDF-500	8"	21"





EXPANSION CONDUIT UNIONS



UNFS Type Female/Female



UNFL Type Female/Female



UNYS Type Male/Female



UNYL Type Male/Female

Class I, Div. 1 & 2, Groups C,D
Class I, Zone 1, Groups IIB, IIA
Class II, Div. 1 & 2, Groups E,F,G
Class III

UL Standards 886 and 1203
 CSA Standard C22.2 No. 30
 Mil Spec: MIL-F28675

LISTED File No. E 10514

Certified File No. LR11716

FEATURES-SPECIFICATIONS

UNFS & UNYS – Standard Length
UNFL & UNYL – Long Length

Application

- To provide for slight expansion and contraction of conduit runs
- To retrofit sections of conduit runs

Features

- Tapered threaded hubs (NPT) for rigid conduit and IMC
- Telescoping components allows conduit to be inserted between fixed threaded hubs
- Internal zinc plated carbon steel spring with dichromate dip assures positive grounding
- Close tolerance of mating parts eliminates passage of flame
- Compact diameter allows use where conduit is closely spaced
- Available in standard and long style, male and female version

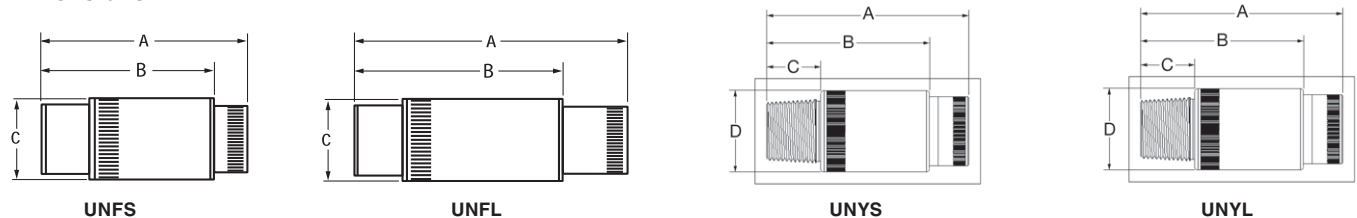
Material/Finish

Body/Sleeve – Steel/Zinc Electroplate

Grounding Spring – Zinc plated carbon steel spring/Natural Finish

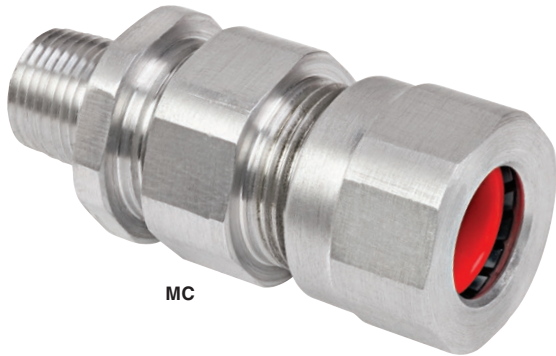
FEMALE – SHORT					
CATALOG NUMBER	HUB SIZE	DIMENSIONS			
		MAXIMUM LENGTH "A"	MAXIMUM LENGTH "B"	DIAMETER "C"	MALE THREAD LENGTH "D"
UNFS1	1/2"	3.34" (85)	2.84" (72)	1.19" (30)	-
UNFS2	3/4"	3.53" (90)	2.97" (75)	1.44" (37)	-
UNFS3	1"	3.69" (94)	3.08" (78)	1.69" (43)	-
FEMALE – LONG					
CATALOG NUMBER	HUB SIZE	DIMENSIONS			
		MAXIMUM LENGTH "A"	MAXIMUM LENGTH "B"	DIAMETER "C"	MALE THREAD LENGTH "D"
UNFL1	1/2"	4.34" (110)	3.34" (85)	1.19" (30)	-
UNFL2	3/4"	4.53" (115)	3.47" (88)	1.44" (37)	-
UNFL3	1"	4.69" (119)	3.58" (91)	1.69" (43)	-
MALE – SHORT					
CATALOG NUMBER	HUB SIZE	DIMENSIONS			
		MAXIMUM LENGTH "A"	MAXIMUM LENGTH "B"	DIAMETER "C"	MALE THREAD LENGTH "D"
UNYS1	1/2"	3.48" (88)	2.97" (75)	1.19" (30)	.875" (22)
UNYS2	3/4"	3.60" (91)	3.03" (77)	1.44" (37)	.875" (22)
UNYS3	1"	3.93" (100)	3.15" (80)	1.69" (43)	1.100 (28)
MALE – LONG					
CATALOG NUMBER	HUB SIZE	DIMENSIONS			
		MAXIMUM LENGTH "A"	MAXIMUM LENGTH "B"	DIAMETER "C"	MALE THREAD LENGTH "D"
UNYL1	1/2"	4.48 (114)	3.48 (88)	1.19 (30)	.875" (22)
UNYL2	3/4"	4.60 (117)	3.53 (90)	1.44 (37)	.875" (22)
UNYL3	1"	4.75 (121)	3.65 (93)	1.69 (43)	1.100 (28)

Dimensions



Other Fittings from Killark

ALUMINUM CABLE CONNECTORS



MC

CLENCHER®

Applications

Designed for use with jacketed interlocked, continuously corrugated and welded armor cable. Install where it is essential to provide positive grounding to the cable and for a Type 3,4 connection.

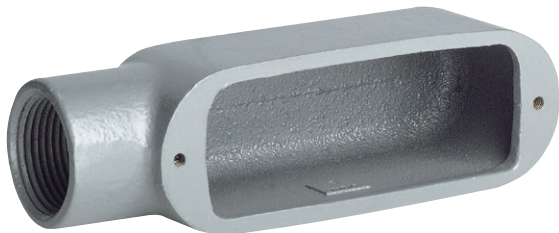
Features

- 360° armor grounding spring is reusable.
- Robust threads and world class seal enables easy installation with minimal torque required.
- Design meets and exceeds third party requirements for cable retention.
- Provides sealing back nut plus inner o-ring seal to prevent moisture ingress to the cable armor and enclosure.
- Copper free aluminum construction for hostile, corrosive and certain hazardous locations
- Entry thread sizes 1/2" through 4"

ALUMINUM OR MALLEABLE IRON CONDUIT BODIES



C Type



E Type

DURALOY® 5

Applications

To provide access to conductors for pulling, splicing, and maintenance. Threaded for rigid conduit and IMC.

Features

- Tapered threaded hubs (NPT)
- Raintight when used with gasketed covers
- Interchangeable with competitive products
- Stainless steel screws on stamped and cast covers
- Available in both copper free aluminum and malleable iron
- 9 hub configurations

HKSB-AFAF8 04-18 © Killark, 2018

KILLARK®

Hubbell Killark
3940 Dr. Martin Luther King Drive • St. Louis, MO 63113
Phone: (314) 531-0460 • Fax: (314) 531-7164
www.hubbell-killark.com



Harsh & Hazardous